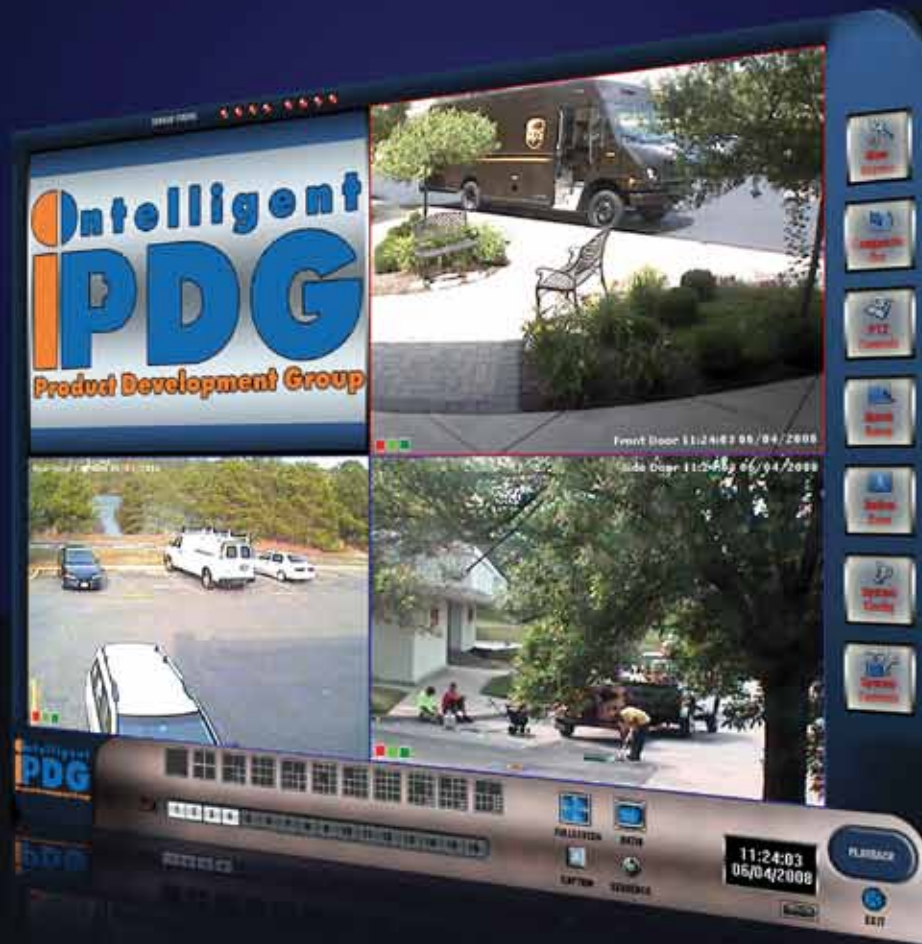


Intelligent IPDG Product Development Group



TRUEHYBRID™ SERIES
Quick Start Installation Manual

TrueHybrid Installation, Quick Start and Troubleshooting Guide

- 1. Product Checklist**
- 2. Basic Setup of Your Hardware**
- 3. Enabling Remote Access**
- 4. Quick Start**

Intelligent Product Development Group

toll free(877)559-CCTV

fax:(732)281-1365

info@intelligentpdg.com

www.intelligentpdg.com

1. Product Checklist

Each TrueHybrid system contains the following components:

1 TrueHybrid Digital Video Recorder

1 Copy of the TrueHybrid Remote Software

1 Installation, Troubleshooting and Quickstart Guide

1 Accessory Box

Intelligent Product Development Group

toll free(877)559-CCTV

fax:(732)281-1365

info@intelligentpdg.com

www.intelligentpdg.com

2. Basic Setup of Your Hardware

Open all packaging, and match the appropriate interface devices (mouse, keyboard) to the TrueHybrid master device, and set aside for use when accessing that master device

Optimally, where power is supplied to components of your surveillance network an uninterruptible power source (UPS) should be used to ensure continuity of security. At minimum, surge protection devices must be used to protect the equipment from electrical damage. IPDG cannot warranty products for failures due to electrical damage if adequate surge protection devices are not used.

Open all packaging, and match the appropriate interface devices or peripherals (mouse, keyboard) to the TrueHybrid master device, and set aside for use when accessing the TrueHybrid. Connect any monitors to be used with the system to the available ports on the TrueHybrid, and finally all necessary power cabling for all components.

Optimally, where power is supplied to components of your surveillance network an uninterruptible power source (UPS) should be used to ensure continuity of security. At minimum, surge protection devices must be used to protect the equipment from electrical damage. IPDG cannot warranty products for failures due to electrical damage if adequate surge protection devices are not used.

When connecting analog cameras to the system, use the appropriate coaxial connections on the rear of the TrueHybrid or connect the multi-channel bridge for systems displaying a larger numbers analog channels.

When connecting a TrueHybrid with multiple Network Interface Cards to a network, be sure you separate the connections between the one meant to interface with any system Video LAN (which all IP cameras should be on) and the one meant to interface with your normal network (which will be the means through which the TrueHybrid connects to outside computer networks).

Intelligent Product Development Group

toll free(877)559-CCTV

fax:(732)281-1365

info@intelligentpdg.com

www.intelligentpdg.com

3. Enabling Remote Access

Your TrueHybrid comes pre-configured for remote viewing from off-site locations. Included with your TrueHybrid system is a copy of the TrueHybrid Remote software. The software must be installed on any system you wish to utilize to remotely access your TrueHybrid unit to view system video.

Once you have installed the remote viewing software, run it from wherever location you have selected, and click on the “Connection Manager” button in the upper right. From that popup window, input a name you wish to use to describe the system, the fixed IP address of your system (and any needed port information) and any passwords for remote access you have setup in the system (the default is no password protection). Then click connect. Close the popup window when the connection is complete.

You will be required to give any router you connect to the TrueHybrid an IP address on your overall network and setup all necessary permissions and port forwarding. Your TrueHybrid is configured to allow remote connections on ports 31000-31010 (TCP and UDP).

If you have an additional router/firewall on your network, please consult its owner's manual or consult your network administrator to establish an IP address and proper port forwarding through to your TrueHybrid. If you are unsure if you have an additional router/firewall on your network, please contact iPDG technical support at 1-877-559-CCTV for assistance (**please note that we are unable to help configure any router/firewall other than the one supplied with your TrueHybrid**).

Intelligent Product Development Group

toll free(877)559-CCTV

fax:(732)281-1365

info@intelligentpdg.com

www.intelligentpdg.com

4. Quick Start

This guide will explain to you the basic operation of your TrueHybrid and TrueHybrid Remote.

Table of Contents

- A. TrueHybrid Versus the TrueHybrid Remote
- B. The TrueHybrid Interface - Live Video
- C. The TrueHybrid Interface - Playback
- D. The TrueHybrid Remote Interface - Live Video
- E. The TrueHybrid Remote Interface - Playback Video
- F. Using the Digital Zoom Feature
- G. Using the AVI Clip Maker

Intelligent Product Development Group

toll free(877)559-CCTV

fax:(732)281-1365

info@intelligentpdg.com

www.intelligentpdg.com

A. The TrueHybrid Versus the TrueHybrid Remote

The primary function of the TrueHybrid is to record video from surveillance cameras. You may view live or recorded video directly at the TrueHybrid or remotely from any PC with TrueHybrid Remote software. The TrueHybrid Remote provides the ability to access the TrueHybrid from a remote computer via a broadband network connection. Note: The TrueHybrid Remote is not a web browser program, the TrueHybrid is a video server and the computer running the TrueHybrid Remote software connects to the server as a client. TrueHybrid Remote requires a reliable broadband Internet connection and the TrueHybrid Remote software must be installed on the desired remote computers.

Intelligent Product Development Group

toll free(877)559-CCTV

fax:(732)281-1365

info@intelligentpdg.com

www.intelligentpdg.com

B. The TrueHybrid Interface - Live Video

Your TrueHybrid is set to automatically start the TrueHybrid software when the unit is powered up. Below is an example of the TrueHybrid main screen with live camera feeds.



1. Screen Split – Click to show one channel or up to 4 at a time
2. Camera Selection – Click to select active camera channels
3. Time and Date – The current system time and date
4. Virtual Keyboard – Click to activate the on-screen virtual keyboard
5. Camera Caption Select - Enables/disables Camera onscreen information
6. Video Source Configuration - Add/edit video sources
7. Full-screen Mode – View live video without the user interface, right click and hold to restore the UI
8. Playback Mode – Enter Video Playback mode
9. Exit System - Place system in Power Saving Mode
10. Adjust Text Properties - Not included with all systems
11. Camera Selector for Text - Not included with all systems
12. Composite Out - Configure additional monitors
13. PTZ Controls - Control movements of installed PTZ Cameras
14. Configure System - Additional administrative features
15. Quick Setup - Quick access to commonly changed settings

C. The TrueHybrid Interface - Playback

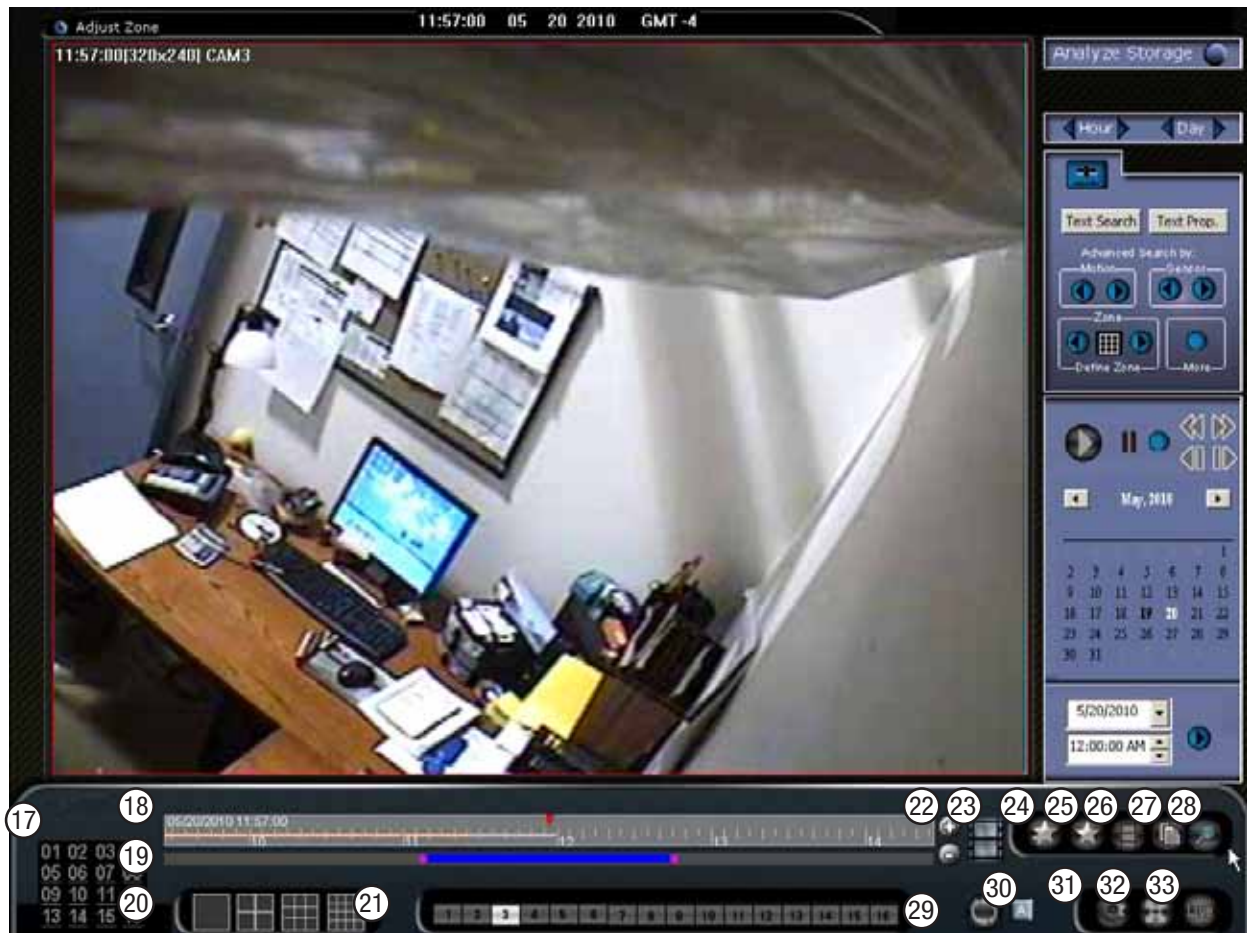
One of the principal uses of the TrueHybrid is to store and playback recorded video. In order to access playback video, left click the “Playback” button (the middle button of the three) in the lower right of the screen. Below is an example of the TrueHybrid playback video screen.



1. Analyze Storage - Determine system's maximum storage capacity
2. Hour/Day Navigation - Quickly move through stored video by hour or day
3. Show Camera Search Timeline
4. Text Search - Not included with all systems
5. Text Properties - Not included with all systems
6. Search by Motion
7. Search by Sensor
8. Search by Zone
9. More Settings
10. Play - Starts playback of selected camera(s)
11. Pause - Pauses playback video
12. Fast Play - Playback at high speed
13. Fast Forward/Reverse - Fast play in reverse or forward motion
14. Step Controls - Step video in reverse or forward by one key frame
15. Video Searches/History - Display of available video history as a calendar
16. Quick Date/Time Select

C. The TrueHybrid Interface - Playback(cont.)

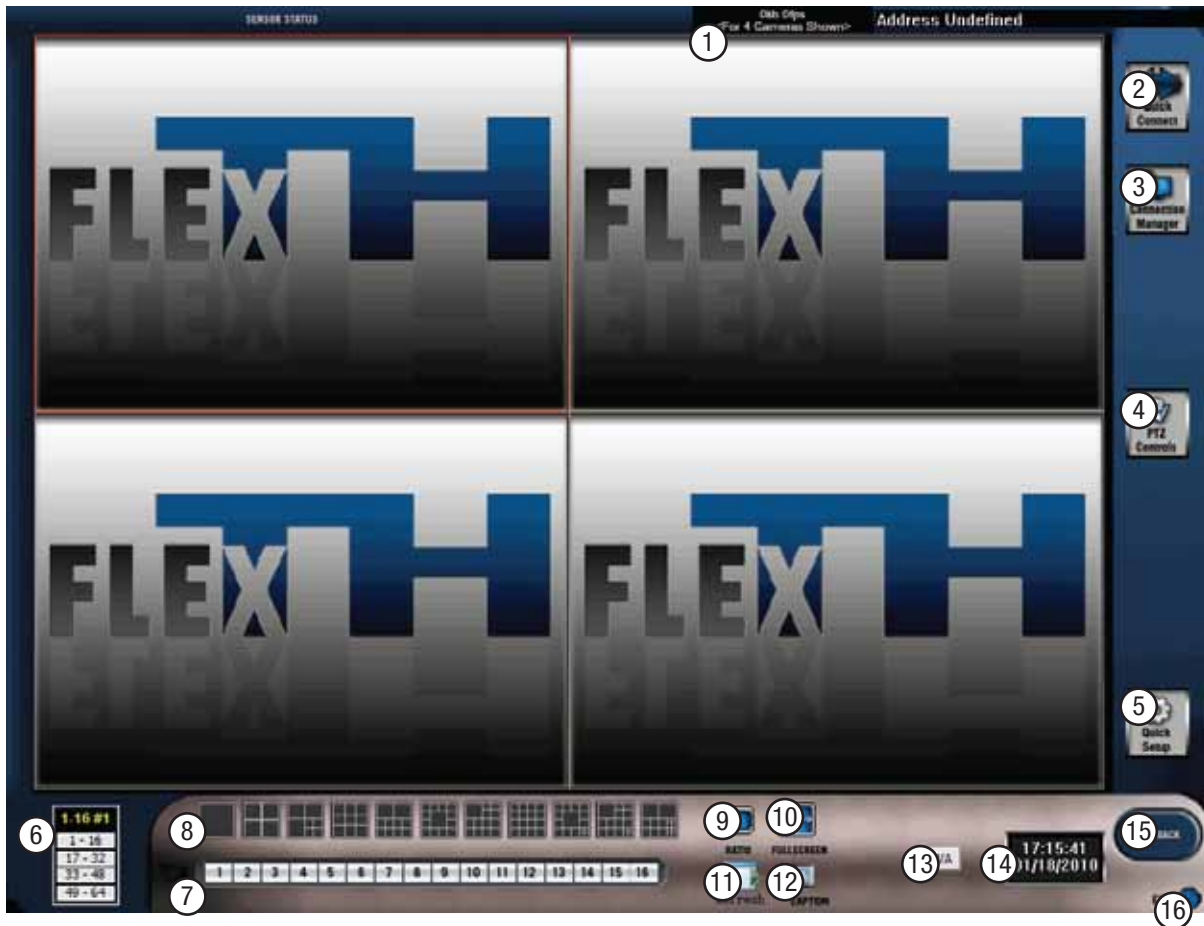
One of the principal uses of the TrueHybrid is to store and playback recorded video. In order to access playback video, left click the “Playback” button (the middle button of the three) in the lower right of the screen. Below is an example of the TrueHybrid playback video screen.



17. Camera Selector for Text - Not included with all systems
18. Recorded Video Finder – Drag the Video Finder left or right to view earlier or later recorded video
19. Video Clip Selector – Drag the ends of the blue bar to cover the length of time displayed in the video finder you want to produce an AVI for
20. Screen Split – Click to show one channel or up to 16 at a time
21. Camera Selection – Click to select active camera channels
22. Zoom In/Out on Recorded Video Finder – Increases and decreases the time period covered by the Video Finder
23. Video Clip Maker – Click to begin recording a video clip from the selected camera
24. Add Selection to Bookmarks
25. Manage Bookmarks
26. Quick Copy - Make a quick copy of currently selected video
27. Export/Backup Playback Recorded Video
28. Digital Zoom - See section F
29. Refresh Recorded Video – Bring the recording archive up to date
30. Camera Caption - Toggle camera information on video screen
31. Recorded Video Management
32. Full-screen Mode - View recorded video without the user interface, right click and hold to restore the UI
33. Live Video Mode – Click to enter Live Video mode

D. The TrueHybrid Remote Viewer Interface - Live Video

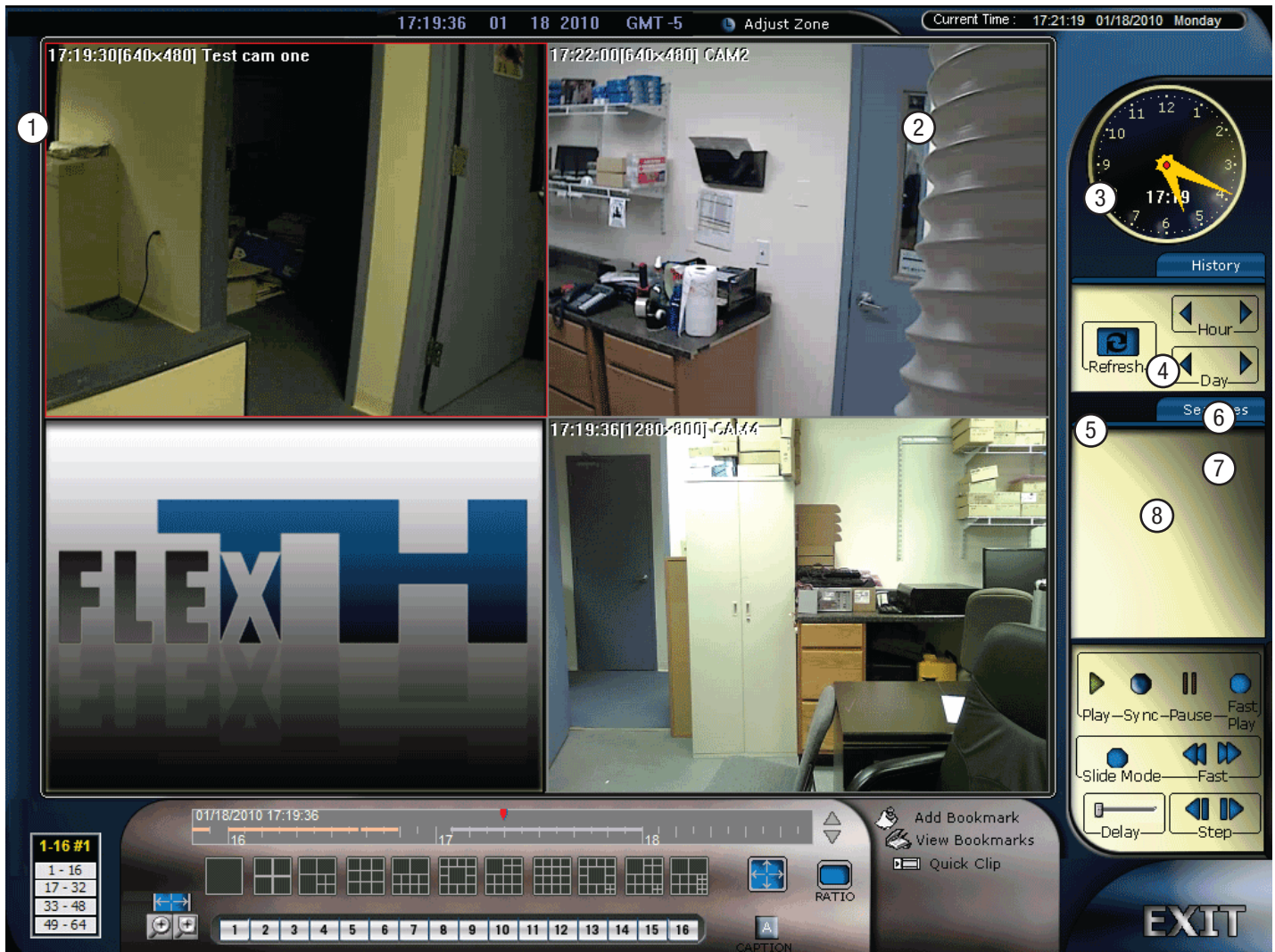
When using the TrueHybrid Remote to access your TrueHybrid Base Station from another PC to view live video, you will be presented with a screen that is very similar to the TrueHybrid User Interface. Below is an example of the TrueHybrid Remote Viewer live video screen.



1. Connection Information
2. Quick Connect – Connect to the last connected to TrueHybrid
3. Connection Manager – Setup connections
4. PTZ Controls – Not for use with all systems
5. Quick Setup – Adjust TrueHybrid system options
6. Camera Set Select – Not for use with all systems
7. Camera Selection – Click to highlight active camera channels
8. Screen Split – Click to show 1 or more cameras at a time
9. Ratio – Adjust aspect ratio
10. Fullscreen – View video without the user interface, right click and hold to restore the UI
11. Refresh – Refresh the display to correct any rendering errors
12. Caption – Hide/Show Camera Info
13. 2WA – 2 way audio control, not for use with all systems
14. Time and Date – The current system time and date
15. Playback – Enter video playback mode
16. Exit – Exit the TrueHybrid Remote Viewer

E. The TrueHybrid Remote Interface - Playback Video

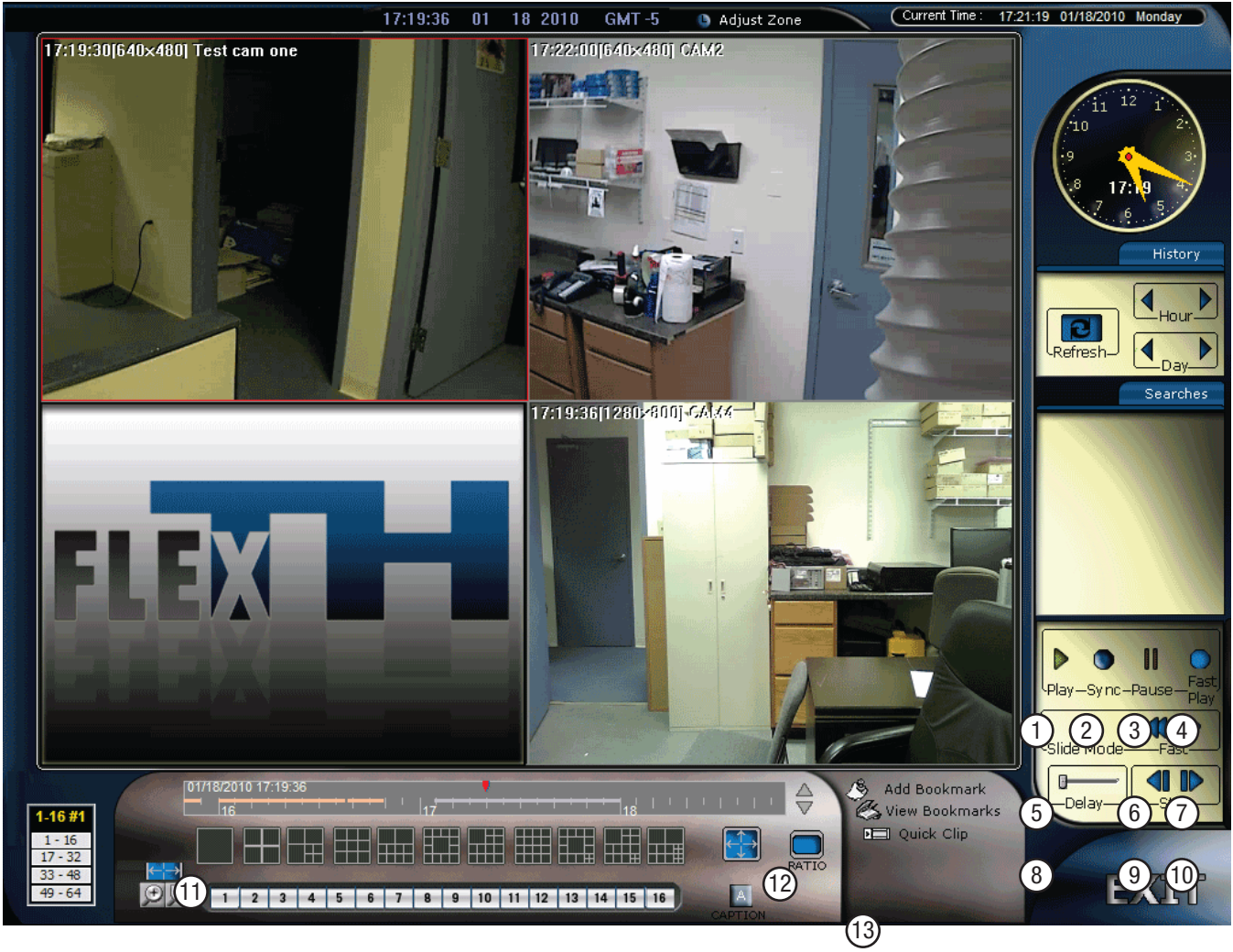
When using the TrueHybrid Remote to access your TrueHybrid from another PC to view playback video, you will be presented with a screen that is very similar to the TrueHybrid User Interface. Below is an example of the TrueHybrid Remote video screen.



1. Connection Information
2. Time and Date – The current system time and date
3. Video Time and Date – The time and date of the video being displayed.
4. History – Toggle display of video history by day
5. Refresh – Bring the recording archive up to date
6. Hour – Advance or rewind video by 1 hour
7. Day – Advance or rewind video by 1 day
8. Search – Toggle to search options

E. The TrueHybrid Remote Interface - Playback Video

When using the TrueHybrid Remote to access your TrueHybrid from another PC to view playback video, you will be presented with a screen that is very similar to the TrueHybrid User Interface. Below is an example of the TrueHybrid Remote video screen.



1. Play
2. Sync – Play with audio sync, not currently available
3. Pause
4. Fast Play
5. Slide Mode
6. Rewind
7. Fast Forward
8. Delay
9. Step back by frame
10. Step forward by frame
11. Recorded Video Finder – Drag the Video Finder left or right to view earlier or later recorded video
12. Zoom In/Zoom Out Recorded Video Finder – Increases and decreases the time period covered by the Video Finder
13. Quick Clip – Make a 5 megabyte video clip from the time selected in the Video Finder

F. Using the Digital Zoom Feature

The TrueHybrid digital zoom feature is accessed by clicking the “Gear” icon in the TrueHybrid Playback Interface, then selecting “Digital Zoom” and “Zoom Whole Video” from the drop downs that appear. This feature lets you look more closely at images captured by your system to see details which do not necessarily appear at normal zoom levels. The TrueHybrid’s default cameras operate at a resolution of 640x480 which allow for some level of image enhancement using the TrueHybrid Digital Zoom. Higher resolution devices like megapixel or multi-megapixel cameras allow for even more detail when conducting a digital zoom. For more information on purchasing higher resolution megapixel cameras contact IPDG Tech Support at 1-877-559-CCTV. Below is an example of a screen showing Digital Zoom.



1. Exit – Click to exit the Digital Zoom feature, and return to video playback
2. Move the Image – Click the appropriate arrow to move the zoomed image, or click the center box to center the image.
3. Zoom – Click the + to increase the level of zoom, Click the – in decrease the level of zoom, or drag the slide bar to adjust zoom level.
4. Operation – Click to select which image processing function to use, select each in turn to see which produces the desired result for your image.
5. 1024 – Set the Digital Zoom window resolution to 1024 vertical lines.
6. Desktop – Set the Digital Zoom window resolution to the desktop resolution
7. Jpg Save – Save the current image as a jpeg file.
8. Send Print Jpeg – Print the image as a jpeg.

G. Using the AVI Clip Maker

Your system is capable of making an exportable clip of your recorded system video in the AVI format.

In order to do so, enter into Video Playback mode, click the Refresh Recorded Video button, then select the single camera channel you wish to make a clip from by double clicking on that image. Use whatever means you prefer to navigate to the selected vide (using the Recorded Video Finder, the Video History Controls etc.) and be sure you have zoomed in or out in the Recorded Video Finder sufficiently such that the entire length of recorded is displayed in the time range detailed in the Recorded Video Finder.

Using your mouse drag each end of the AVI Clip Selector bar to the beginning and end of the time you wish to make a clip of, then click the Make an AVI button. On the popup window that appears select the type of media you will be storing to and click OK. From the popup window that appears select the folder you wish to save the video in, and the file name you wish to save the video under, then click Save.

A red progress bar will appear on top of the Avi Clip Select indicating the amount of time left till the video is finished writing to the selected location.